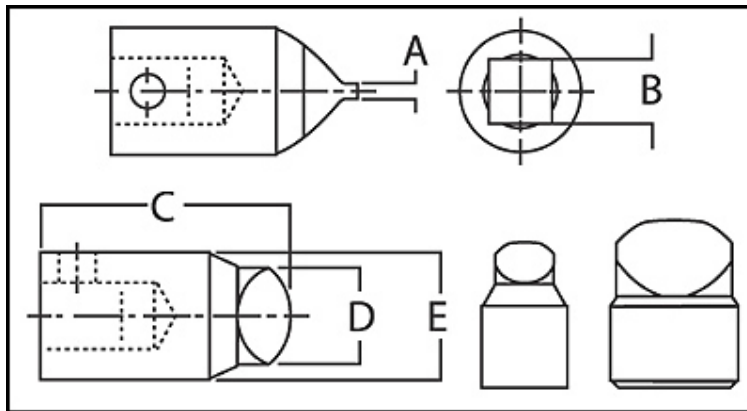


SABRE AIRCRAFT TOOLS

Screwdriver Bits

HI-TORQUE Drivers MS33750, MIL-B-9946

Part No.	Industry No.	A Blade Thickness	D Blade Width	B Drive Size	C Length inch/mm	E Body Diameter inch/mm	Recess	Screw Size
SA28400	HTS-0	.029	.167	1/4	1" (25.4mm)	1/2" (12.7mm)	0	0, 1, 2
SA28401	HTS-1	.049	.274	1/4	1" (25.4mm)	1/2" (12.7mm)	1	3, 4, 5, 6
SA28402	HTS-2	.059	.295	1/4	1" (25.4mm)	1/2" (12.7mm)	2	8
SA28403	HTS-3	.059	.377	1/4	1" (25.4mm)	1/2" (12.7mm)	3	10
SA28404	HTS-3A	.059	.377	3/8	1" (25.4mm)	3/4" (19.1mm)	3	10
SA28405	HTS-4	.073	.502	1/4	1" (25.4mm)	1/2" (12.7mm)	4	1/4
SA28406	HTS-4A	.073	.502	3/8	1" (25.4mm)	3/4" (19.1mm)	4	1/4
SA28407	HTS-5	.079	.629	3/8	1-1/4" (31.75mm)	3/4" (19.1mm)	5	5/16
SA28408	HTS-6	.095	.745	3/8	1-1/4" (31.75mm)	3/4" (19.1mm)	6	3/8
SA28409	HTS-7	.112	.884	1/2	1-5/8" (41.28mm)	1" (25.4mm)	7	7/16
SA28410	HTS-8	.142	.995	1/2	1-5/8" (41.28mm)	1" (25.4mm)	8	1/2
SA28411	HTS-9	.162	1.1136	1/2	1-5/8" (41.28mm)	1-1/4" (31.75mm)	9	9/16
SA28412	HTS-10	.182	1.250	1/2	1-5/8" (41.28mm)	1-1/4" (31.75mm)	10	5/8



Safety Precaution: Read and follow all safety and operating instructions.
WARNING: Face and eye protections must be worn while operating power tools, per ANSI B186.1

Products and specifications subject to change without prior notice.



www.sabretools.com
 info@sabretools.com